

Available works and price list, 2023:

Plastics series: Clamshell, Parallax, Surplus

Plastics photographs

Edition size for all prints in these series is limited to three per dimension (for example, three each at 12" x 16", 16" x 20", and 20" x 24"). Any prints smaller than 12" x 16" are considered open edition. Prints at scales larger than those listed are available by commission.

Archival inkjet prints: All prints are on high quality glossy paper (Epson or Hannemühle). I do the printing for this series myself, and any prints larger than 12"x18" are printed at Silver Eye Labs in Pittsburgh PA.

12"x 12", 12 x 16" to 12" x 18": \$350

16"x 16", 16" x 20" to 16" x 24": \$600

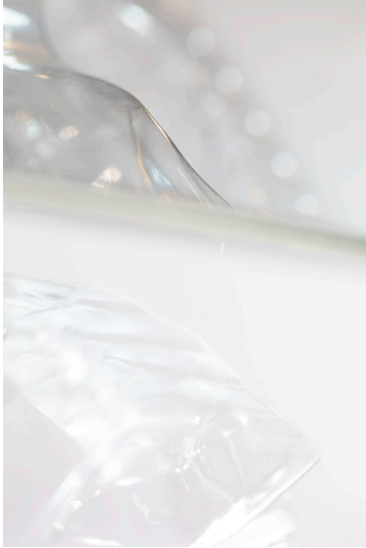
20"x 20", 20" x 24" to 20" x 30": \$700

Acrylic-faced prints: These are produced by Bumblejax in Seattle WA. Prints are archivally stable with Cintra backing, 1/4" acrylic face mount with polished edge. Hanging cleat will be provided, unless you plan to have the print professionally framed floater-style (which I recommend and can facilitate).

12"x 12", 12 x 16" to 12" x 18": \$500

16"x 16", 16" x 20" to 16" x 24": \$850

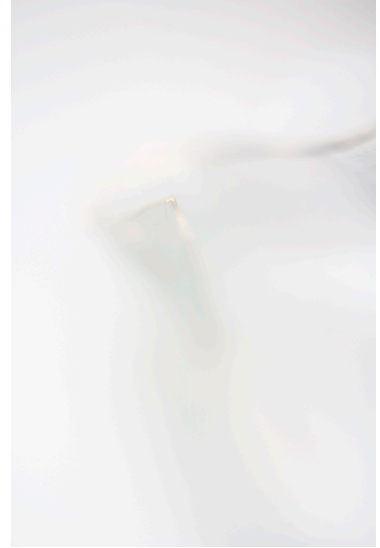
20"x 20", 20" x 24" to 20" x 30": \$950



Plastics 8156 (Parallax)



Plastics 7040 (Clamshell)



Plastics 6258 (Clamshell)



Plastics 8533 (Clamshell)



Plastics 6411 (Clamshell)



Plastics 7010 (Clamshell)



Plastics 8366 (Clamshell)



Plastics 8324 (Clamshell)



Plastics 7776 (Clamshell)



Plastics 8187 (Parallax)



Plastics 7028 (Clamshell)



Plastics 6596 (Clamshell)



Plastics 6416-1/3 (Clamshell)



Plastics 6419-2/3 (Clamshell)



Plastics 6422-3/3 (Clamshell)



Plastics 9594 (Surplus)



Plastics 9597 (Surplus)



Plastics 9609 (Surplus)